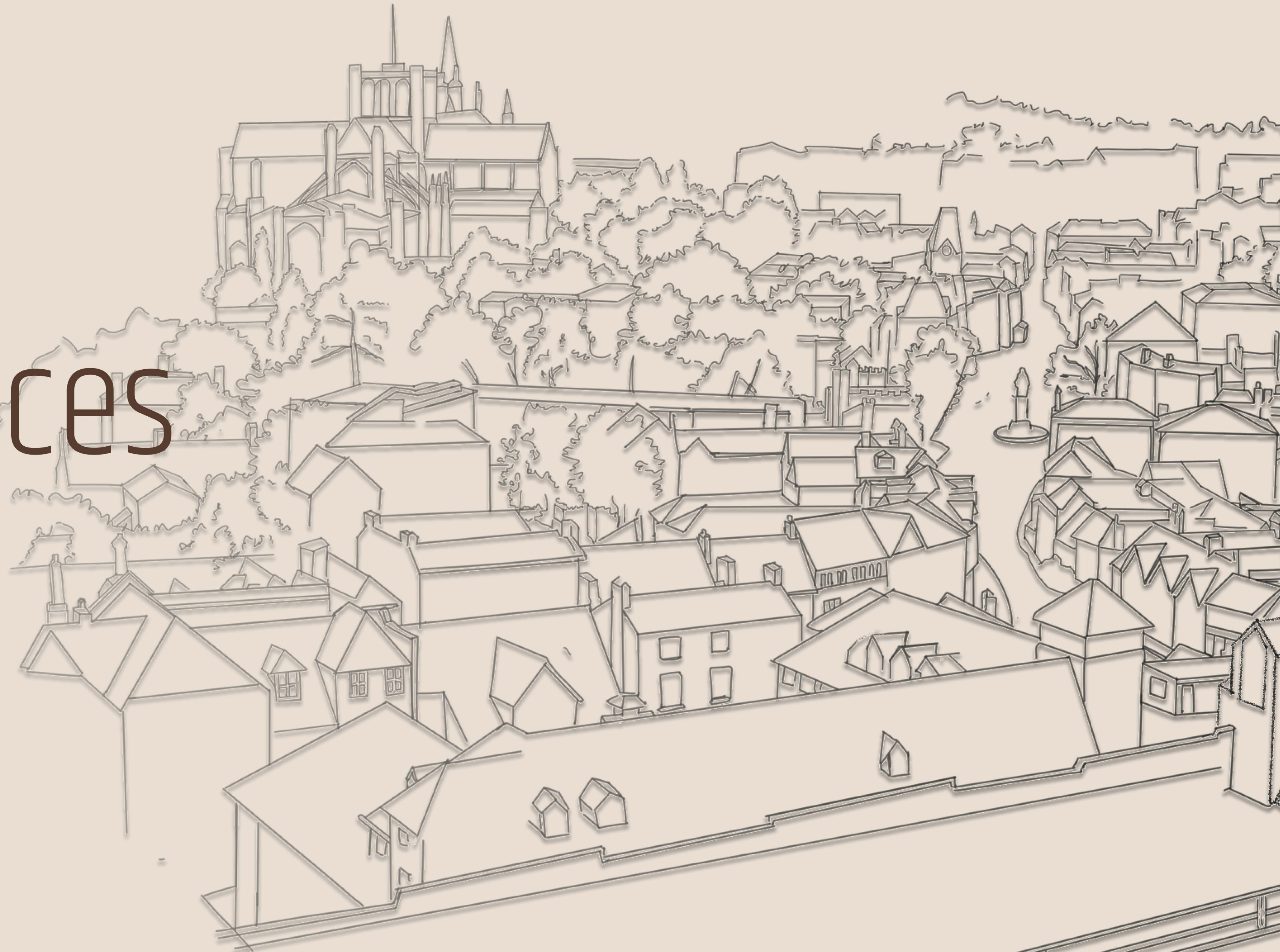


Territories And Interfaces

In Winchester

Presentation By
35774282 Ziyang Zhang



Inspiration

The combination of vision and touch

- Based on careful consideration of the core of this project, "map psychology", and reading relevant literature, I have reached a conclusion that combining maps with personal feelings, that is, conveying one's feelings and thoughts during this journey through maps.
- The survey of H (2019) shows that **different colors can bring people specific feelings**. For example, green is generally associated with natural landscapes (such as grasslands and forests).



- Furthermore, the research results of Iosifyan and Korolkova (2019) show that the **tactile sensations brought by different materials can also cause different emotions in people**. For example, soft materials (such as velvet and rabbit hair) generally trigger happy emotions (due to the sense of comfort).
- Therefore, I will form my feelings about this journey through lines of different materials and colors



Drawing pins

Mark the locations along the way and serve as the connection points of the lines. They also represent emotional changes and turning points.

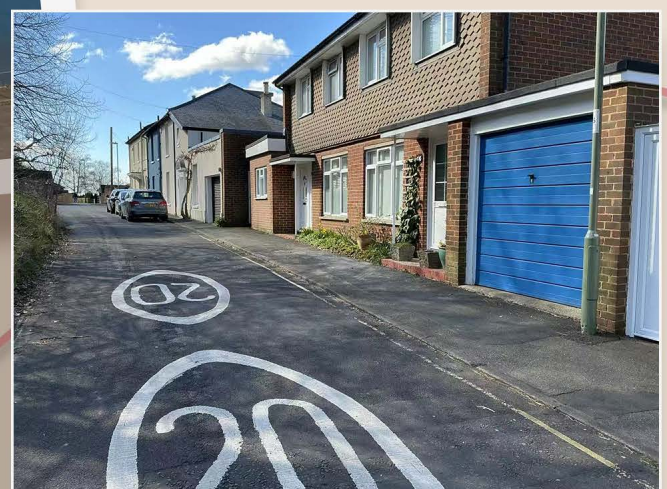
Spun polyester thread

Sharp and pointed but relatively thin, it is used to express some special emotions, such as using this kind of taut thread to express tension.

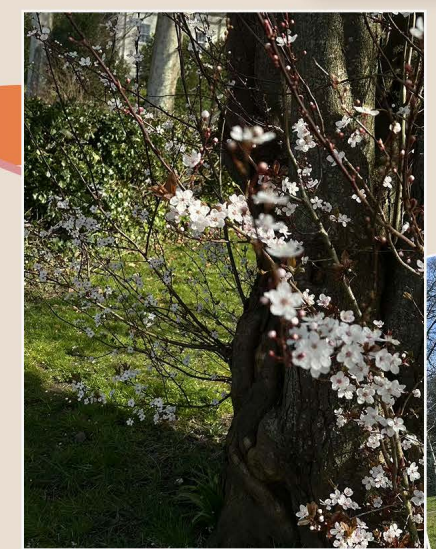
Silk floss thread

It has a strong plush feel and bright colors, and is used to express some gentle emotions.

The sun is very warm. The road is very quiet. There are many small houses and flowers and grass are planted.



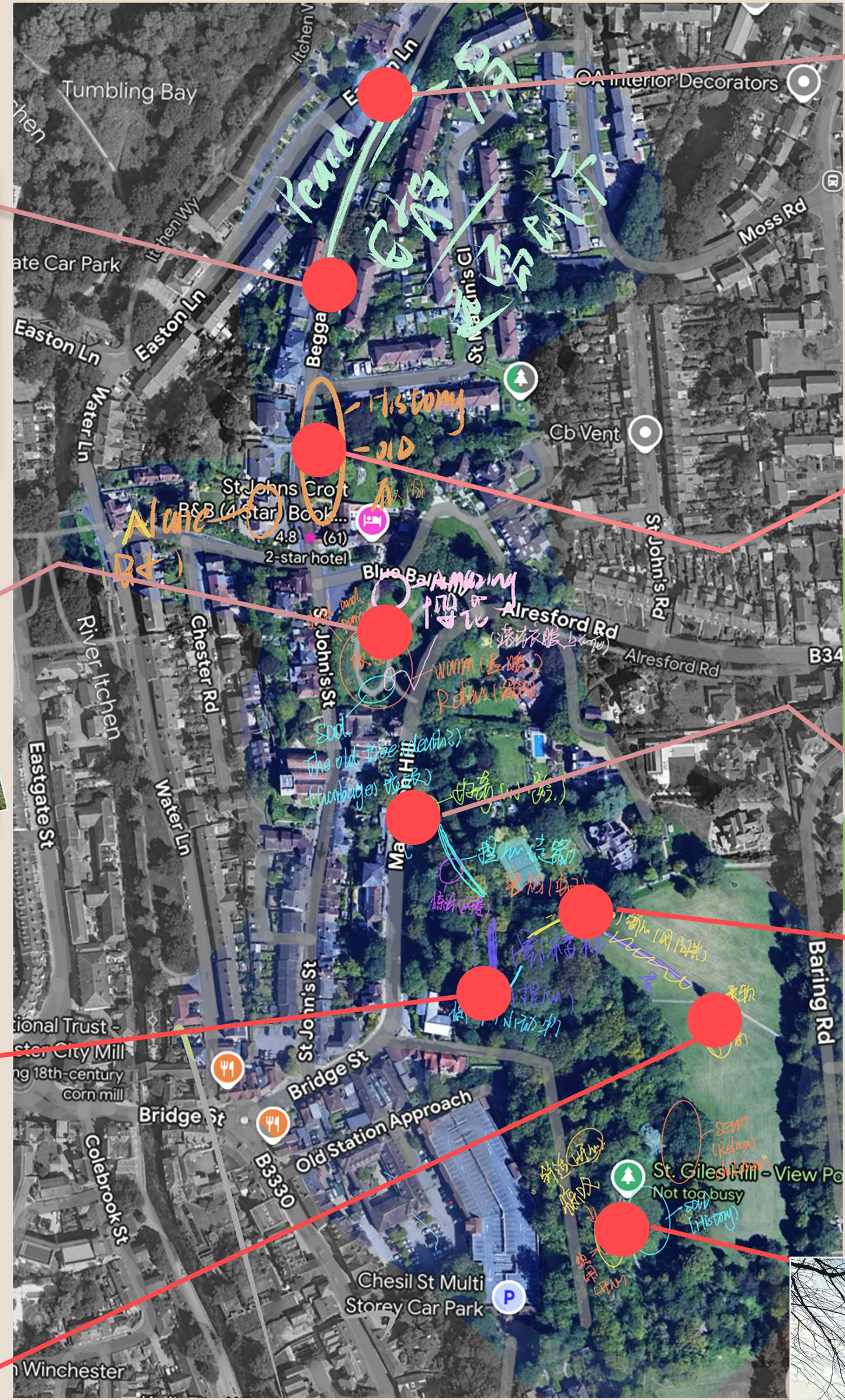
There is a small garden here. I saw very beautiful cherry blossoms and was in a good mood. But on the other side of the garden, there is a dead tree.



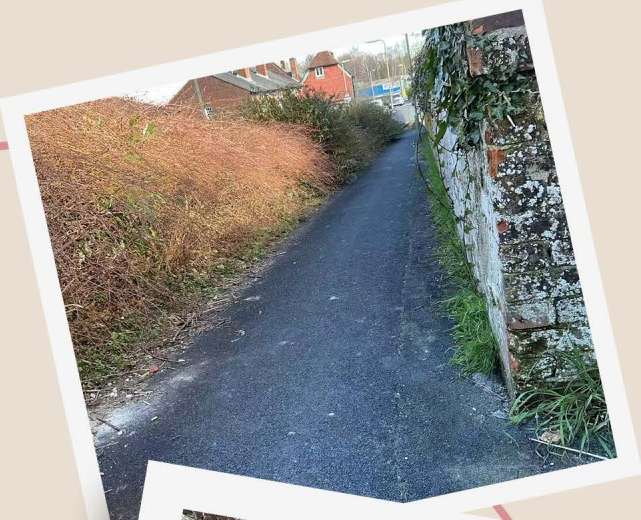
This path is a lot of dirt, but the unexpected scenery is very nice. At the same time, I'm alone and I'm worried that I won't be able to reach the destination.



There is a large lawn with warm sunlight. Seeing someone playing with their pet makes one feel very comfortable.



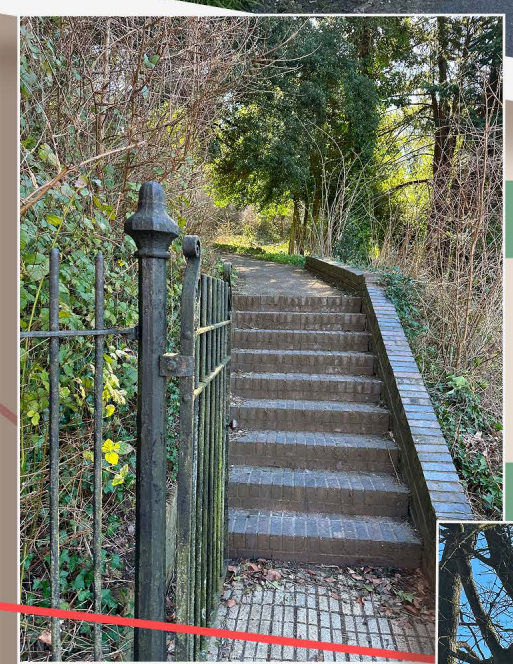
The view from the observation deck is very nice. Some people are having a meal together, some are taking photos, and some families are taking a walk. I feel warm and relaxed.



There is a very narrow uphill road. It is very quiet on the road because it is Saturday



Passing by a brick wall that looked very old, I couldn't help but feel that it was still so intact.

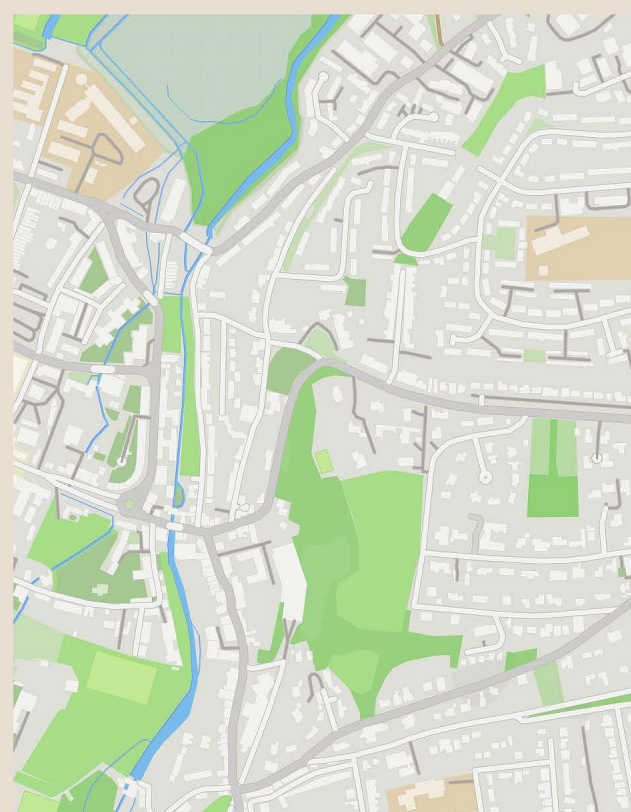
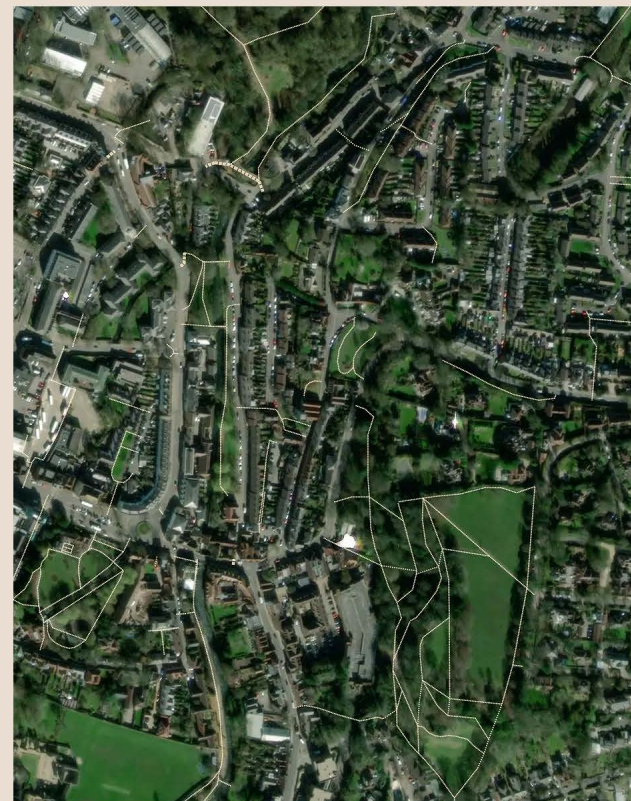


I discovered a small path. It seemed to have a lot of insects. I was a little scared but also very curious.



Fortunately, after walking for a long time, we finally arrived. We were suddenly enlightened and very surprised, but also very tired.





St. Giles Hill-View Point

winchester

SO23 0JJ

15/04/2025

<https://youtu.be/bsP5fK0vHj4>



Giles Hill-View Point



Reference List

Arcadia. (2023). Psychology of Color: The Impact on Emotions, Behavior, and Decision-Making. [online] Available at: <https://www.byarcadia.org/post/the-psychology-of-color-exploring-the-impact-of-colors-on-emotions-behavior-and-decision-making>.

H, H. (2019). Relationship between Color and Emotion: A Study of College Students. College Student Journal, [online] 38(3), p.396. Available at: <https://eric.ed.gov/?id=EJ706686>.

Iosifyan, M. and Korolkova, O. (2019). Emotions associated with different textures during touch. Consciousness and Cognition, 71, pp.79–85. doi:<https://doi.org/10.1016/j.concog.2019.03.012>.